

PART OF THE SW. 1/4, OF SECTION 16, T.6N., R.2W., S.L.B. & M.

721

BRENT HARSHA SUBDIVISION

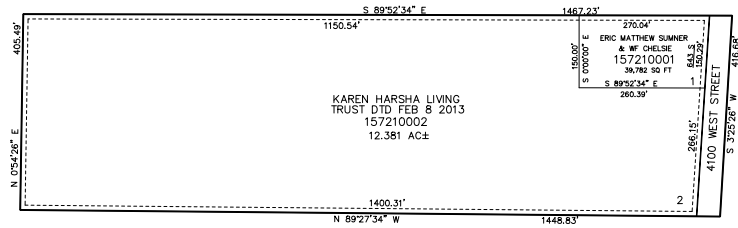
IN WEBER COUNTY

TAXING UNIT: 516

SCALE 1" = 200'

SEE PAGE 46

SEE PAGE 46



SEE PAGE 46

SEE PAGE 46-2

10' UTILITY & DRAINAGE EASEMENTS EACH
SIDE OF PROPERTY LINES AS INDICATED
BY DASHED LINES EXCEPT AS OTHERWISE
SHOWN.

FOR COMPLETE ENC DATA SEE
ORIGINAL DEDICATION PLAT IN
BOOK 88, PAGE 05 OF RECORDS.

FOR TAX PURPOSES ONLY